

ACOMA TOWNSHIP

Each township has six files containing six sections in each, and one file containing all 36 sections.

Acoma01to06.pdf

Acoma07to12.pdf

Acoma13to18.pdf

Acoma19to24.pdf

Acoma25to30.pdf

Acoma31to36.pdf

AcomaAll36.pdf

The points are listed starting with the point above the SE corner and continuing in a counter-clockwise rotation around the section. This normally begins with the East point, Northeast, then North, but may also include Witness Corners, and/or Meander Corners.

Definitions

Witness Corner: A witness corner “stands in” when the true corner cannot be monumented or occupied because of difficult terrain or obstruction of the corner sight. The witness corner must be on the section line and is usually 5 or 10 chains away from the true corner.

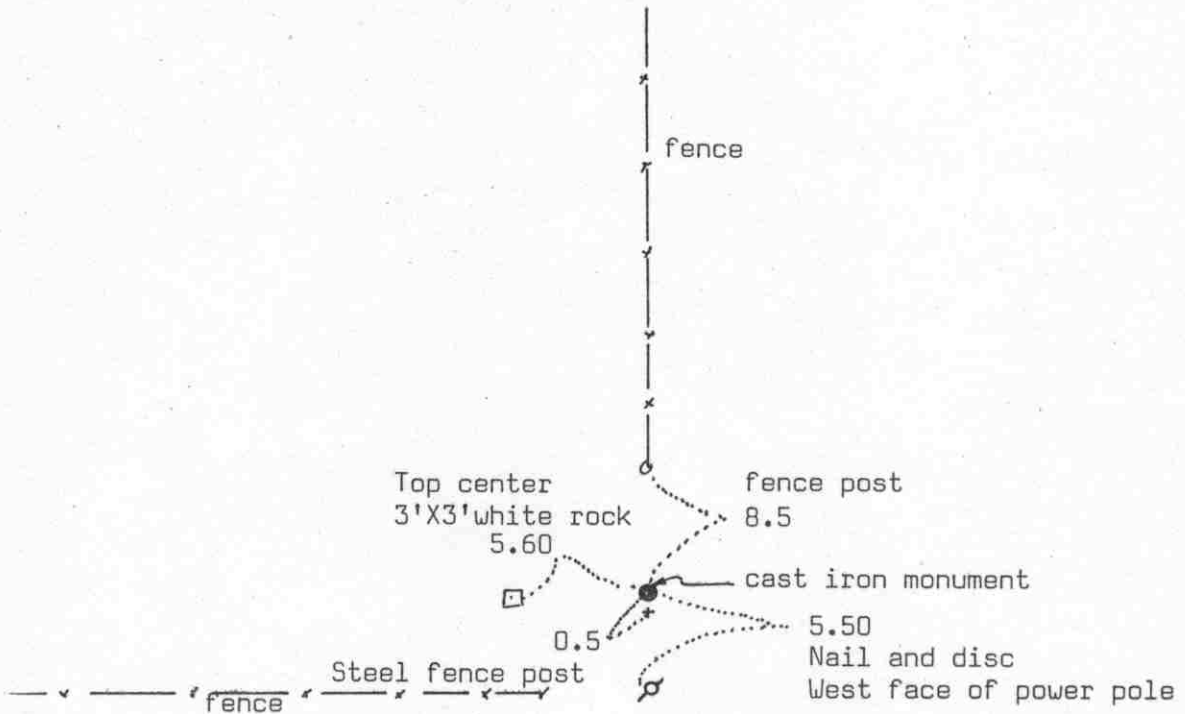
Meander Corner: The intersection of a township, range, or section line and the banks of a navigable stream or meandering body of water.

Certificate of Location of Government Corner



SKETCH OF REFERENCE TIES

(NO SCALE)



Statement of evidence relative to this corner location on sheet 2

I hereby certify that this document was prepared by me or under my direct supervision.

Willard Pellinen

Willard Pellinen
McLeod County Surveyor
License No. 9626

Date 7/31/89

OFFICE OF THE COUNTY RECORDER
MCLEOD COUNTY, MINNESOTA.

I hereby certify that this document was filed in this office at 9 o'clock A.M. on the 15th day of Aug., 19 89.

Carmen Potlie County Recorder

By _____, Deputy

Document No. 229494

EAST QUARTER corner, Section 13, Township 117 North, Range 30 West

Certificate of Location of Government Corner

This corner was originally set by the General Land Office in 1855. John Ryan set a post and had reference ties to 2 bearing trees.

1898. E.L.Higgins found a stone at the corner. He had a distance of 2624 feet to the northeast corner of the section and a distance of 2560 to the southeast corner.

May, 1969. The Minnesota State Highway Department found a stone, quarried to an approximately 5 inch by 3 inch point.

1970. McCombs Knutson Associates (Dickman Knutson, county surveyor) found the stone with a drill hole on top. They replaced the stone with a McLeod County cast iron monument and took reference ties.

February 24, 1989. We found the cast iron monument in good condition and the reference ties good.

We believe the stone found by the highway department and later by Knutson is the same stone found by E.L.Higgins in 1898 and had perpetuated the correct location of the east quarter corner.

Certificate of Location of Government Corner



SKETCH OF REFERENCE TIES
(NO SCALE)

SECTION 12, 117, 30

SECTION 7, 117, 29

Nail and bottle cap
South face of 20 inch cottonwood
Up 3 feet 75.71

chiseled + on top west end of conc. culvert
39.72

cast iron monument
3

center line of gravel road

22.74
Nail and bottle cap
East face of power pole

SECTION 13, 117, 30

SECTION 18, 117, 29

Statement of evidence relative to this corner location on sheet 2

I hereby certify that this document was prepared by me or under my direct supervision.

Willard Pellinen

Willard Pellinen
McLeod County Surveyor
License No. 9626

Date 4/7/90

OFFICE OF THE COUNTY RECORDER
MCLEOD COUNTY, MINNESOTA.

I hereby certify that this document was filed in this office at 4 o'clock P.M. on the 2nd day of May, 1990.

Carmen Ostlie, County Recorder
By _____, Deputy

Document No. 233096

Certificate of Location of Government Corner

August, 1855. This corner was established by John Ryan of the General Land Office. He set a post and had reference ties to 4 bearing trees.

1898. E.L.Higgins found a stone at the corner. He had a distance of 2624 feet to the east quarter corner and a distance of 2397 feet to the meander corner on the west side of Campbells Lake along the north line of Section 13.

September, 1971. McCombs Knutson Associates (Dickman Knutson, county surveyor) set a temporary corner on a proration of old survey distances to a found stone at the east quarter corner of Section 13 and a found stone 1/4 mile north.

October, 1971. Knutson dug for the corner and found a stone at approximately the same location as their temporary corner. They took reference ties and set a McLeod County cast iron monument in place of the stone.

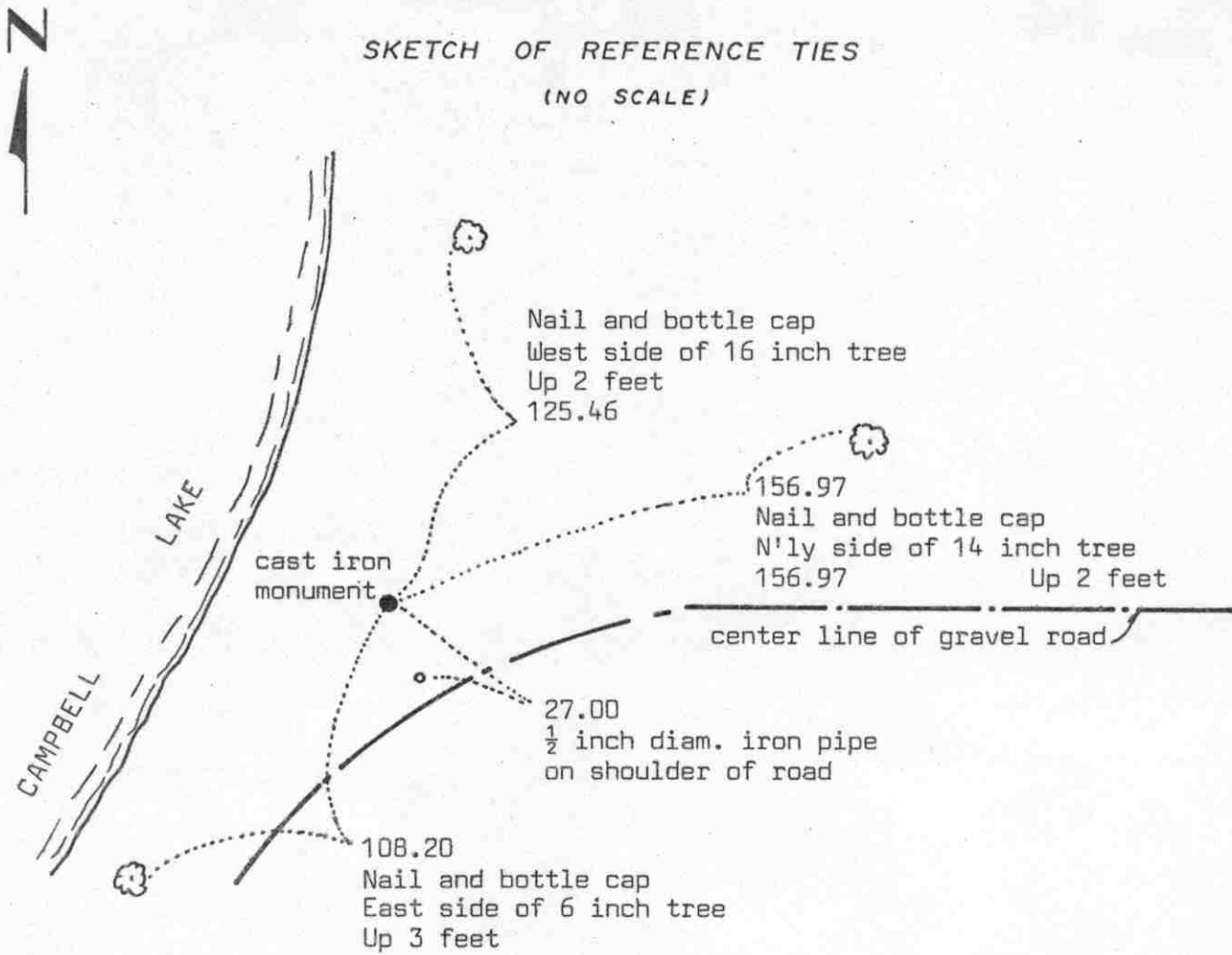
December 17, 1984. We found the cast iron monument in good condition. We measured the north and east lines of Section 13 and had a distance of 2623.49 feet to the east quarter corner and a distance of 2394.39 feet to the meander corner at the west side of Campbell's Lake.

April 3, 1989. We found no ties remaining. We dug and found the monument in good condition, down 4 inches below the road surface. We took new available reference ties.

We feel the stone found by Knutson is the same stone shown in the field notes of Higgins (1898) and that it had perpetuated the correct location of the section corner.

Certificate of Location of Government Corner

SKETCH OF REFERENCE TIES
(NO SCALE)



Statement of evidence relative to this corner location on sheet 2

I hereby certify that this document was prepared by me or under my direct supervision.

Willard Pellinen

Willard Pellinen
McLeod County Surveyor
License No. 9626

Date 5/15/89

OFFICE OF THE COUNTY RECORDER
MCLEOD COUNTY, MINNESOTA.

I hereby certify that this document was filed in this office at 9 o'clock A.M. on the 19th day of May, 19 89.

Carmen Ostlie, County Recorder

By _____, Deputy

Document No. 228247

MEANDER CDR. NO. 28 corner, Section 13, Township 117 North, Range 30 West

Certificate of Location of Government Corner

This meander corner was originally set by the government in 1856. D.L.Langton set a post with reference ties to 2 bearing trees.

In 1898, E.L.Higgins found bearing tree and set the meander corner. He had a distance of 2397 feet to the northeast corner of Section 13, in his section breakdown of Section 13.

On April 14, 1969, we found a 1 inch by 1 inch square iron 2 feet long down 2 feet below the surface. We took reference ties and set a 1½ inch diameter iron pipe over the iron.

On August 8, 1973, we replaced the iron pipe with a McLeod County cast iron monument.

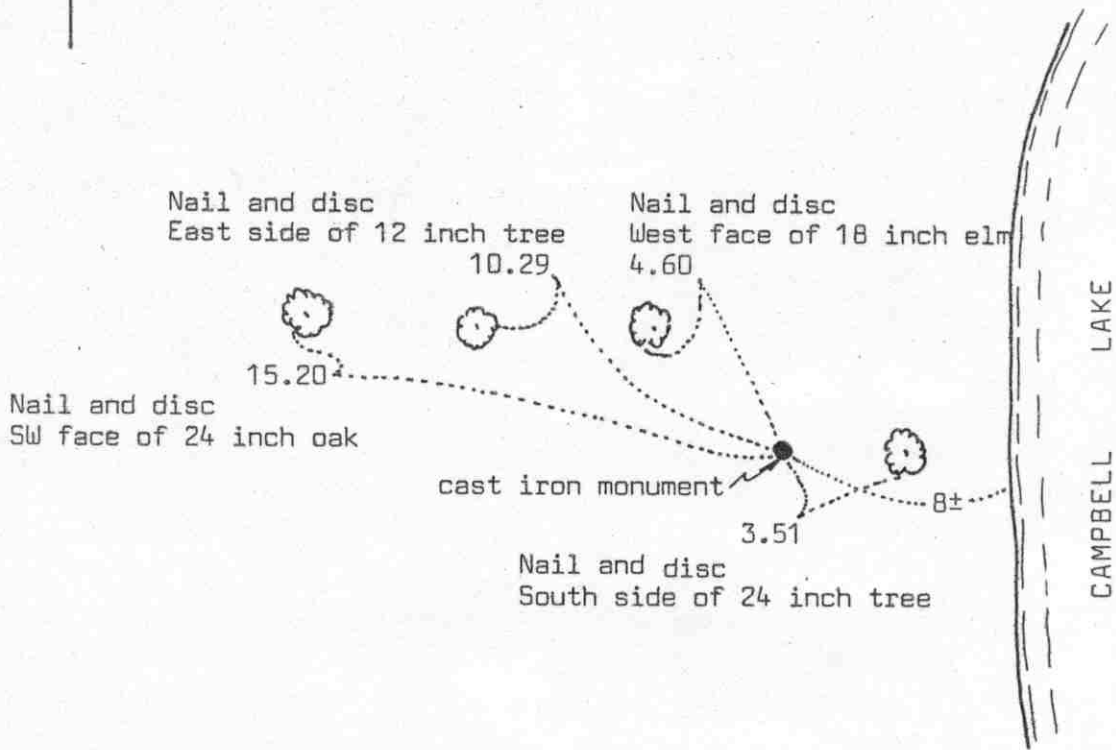
On February 15, 1989, we found found the monument in good condition and took new reference ties.

We believe the found iron was set by E.L.Higgins in 1898 and has perpetuated the correct location of the meander corner.

Certificate of Location of Government Corner



SKETCH OF REFERENCE TIES
(NO SCALE)



Statement of evidence relative to this corner location on sheet 2

I hereby certify that this document was prepared by me or under my direct supervision.

Willard Pellinen
Willard Pellinen
McLeod County Surveyor
License No. 9626
Date 5/15/89

OFFICE OF THE COUNTY RECORDER
MCLEOD COUNTY, MINNESOTA.

I hereby certify that this document was filed in this office at 9 o'clock A.M. on the 18th day of July, 1989.

Carmin Postlie, County Recorder
By _____, Deputy
Document No. 229055

Certificate of Location of Government Corner

This meander corner was originally set by the government in 1856. D.L.Langton set a post with reference ties to 2 bearing trees.

1898. E.L.Higgins found stump of bearing tree and set the meander corner.

August 23, 1973. We found a 2 inch diameter iron pipe 1635.96 feet east of the northwest corner of Section 13. Government distance was 1636.8 feet. (24.8 chains)

August 31, 1973. We replaced the iron pipe with a McLeod County cast iron monument, and took reference ties.

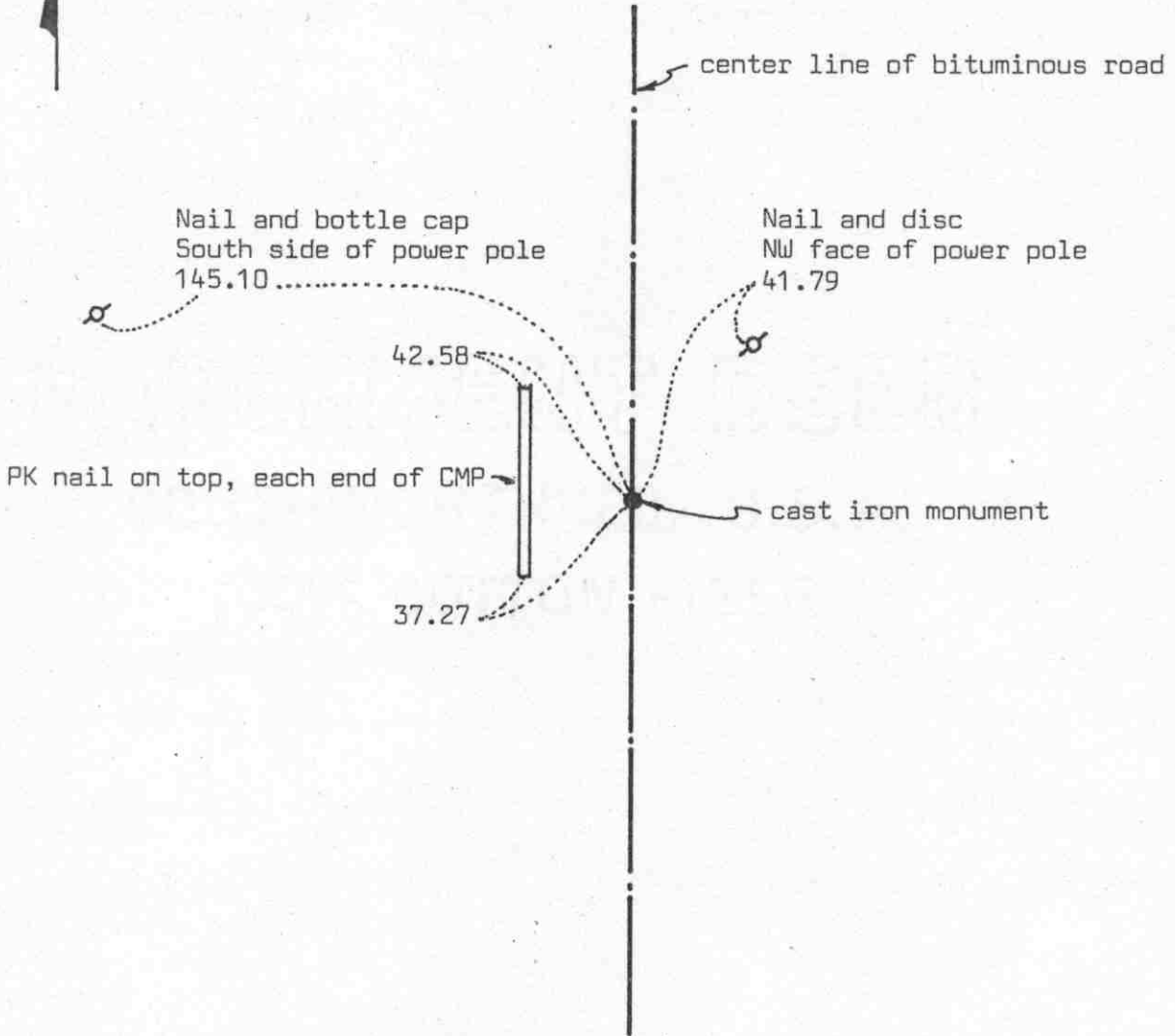
February 15, 1989. We found the monument in good condition and the reference ties good.

Certificate of Location of Government Corner



SKETCH OF REFERENCE TIES

(NO SCALE)



Statement of evidence relative to this corner location on sheet 2

I hereby certify that this document was prepared by me or under my direct supervision.

Willard Pellinen

Willard Pellinen
McLeod County Surveyor
License No. 9626

Date 5/16/89

OFFICE OF THE COUNTY RECORDER
MCLEOD COUNTY, MINNESOTA.

I hereby certify that this document was filed in this office at 9 o'clock A.M. on the 18th day of July, 1989.

Carmen Ostlie County Recorder

By _____, Deputy

Document No. 229056

Certificate of Location of Government Corner

This corner was originally set by the government in 1856. D.L.Langton set a post with reference ties to 2 bearing trees.

1930 road survey by E.L.Higgins shows a distance of 2622 feet to the northeast corner and 2607 feet to the southeast corner of Section 14.

On September 19, 1975, we set a McLeod County cast iron monument on a proration of the 1930 distances. Our distances are within 0.2 foot of the 1930 distances.

On February 15, 1989, we found the monument in good condition and the reference ties good.

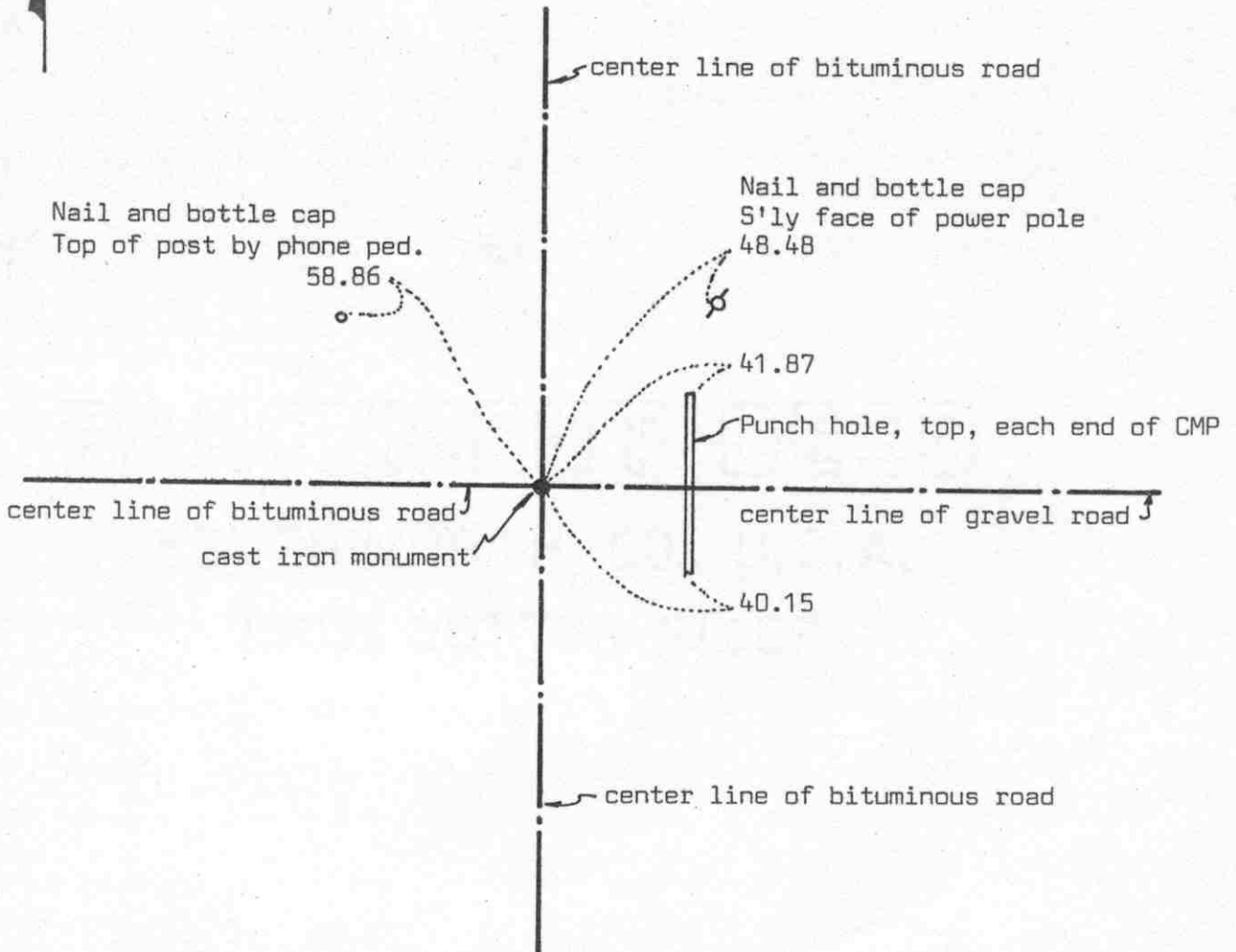
We feel the center line of the road and the 1930 distances by E.L.Higgins have perpetuated the correct location of the quarter corner.

Certificate of Location of Government Corner



SKETCH OF REFERENCE TIES

(NO SCALE)



Statement of evidence relative to this corner location on sheet 2

I hereby certify that this document was prepared by me or under my direct supervision.

Willard Pellinen

Willard Pellinen
McLeod County Surveyor
License No. 9626

Date 5/14/89

OFFICE OF THE COUNTY RECORDER
MCLEOD COUNTY, MINNESOTA.

I hereby certify that this document was filed in this office at 9 o'clock A.M. on the 19 day of May, 1989.

Carmen Ostlie, County Recorder

By _____, Deputy

Document No. 228248

Certificate of Location of Government Corner

This corner was established by the government in 1856. D.L.Langton set a post with reference ties to 4 bearing trees.

1930 road survey shows a distance of 2622 feet to the east quarter corner of Section 14.

In 1953 the Conservation Department had an iron monument at this corner.

1956 County Highway Department notes show a distance of 2620.8 feet to the east quarter corner of Section 14 and a distance of 2591.5 feet to the east quarter corner of Section 11.

On August 23, 1973, we found an iron pin at the center line intersection of the roads. Our distance to the east quarter corner of section 14 is 2621.87 feet and to the east quarter corner of Section 11 is 2592.07 feet.

On August 31, 1973, we replaced the iron pin with a McLeod County cast iron monument and took reference ties.

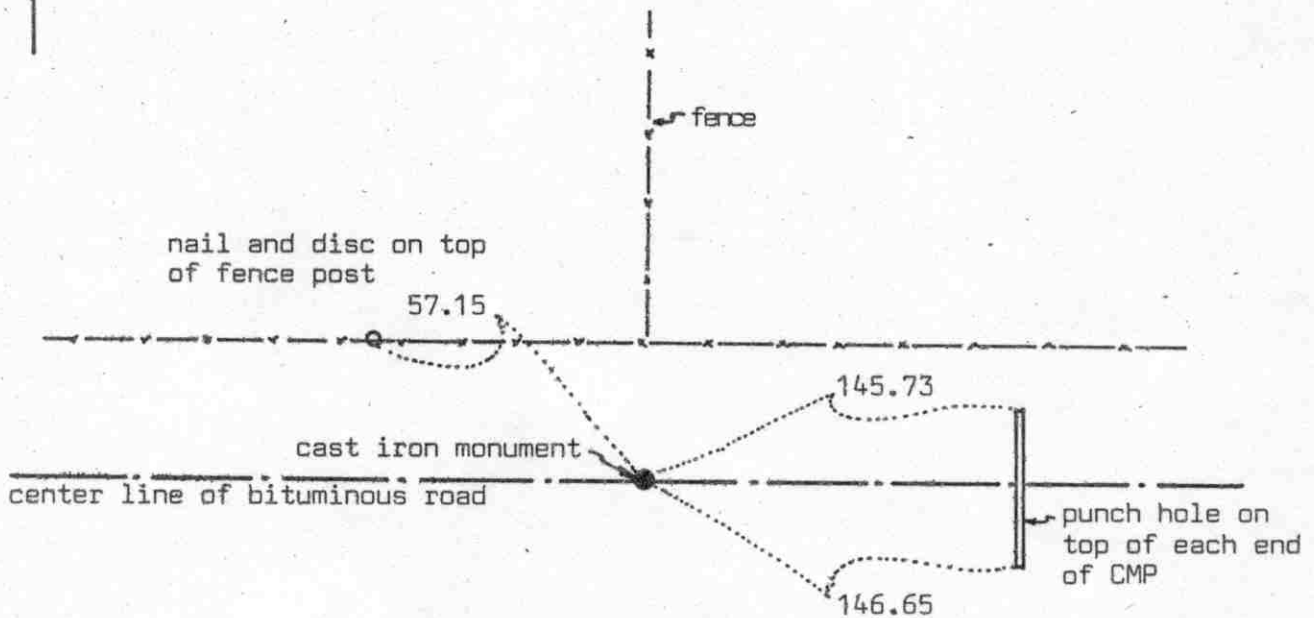
On February 15, 1989, we found the monument in good condition but the reference ties all destroyed. We took new reference ties.

We believe the iron pin we found has perpetuated the correct location of the section corner.

Certificate of Location of Government Corner



SKETCH OF REFERENCE TIES
(NO SCALE)



Statement of evidence relative to this corner location on sheet 2

I hereby certify that this document was prepared by me or under my direct supervision.

Willard Pellinen

Willard Pellinen
McLeod County Surveyor
License No. 9626

Date 3/2/89

OFFICE OF THE COUNTY RECORDER
MCLEOD COUNTY, MINNESOTA.

I hereby certify that this document was filed in this office at 9 o'clock A.M. on the 16th day of March, 1989.

Carmen Postle, County Recorder

By _____, Deputy

Document No. 227285

NORTH QUARTER corner, Section 14, Township 117 North, Range 30 West

Certificate of Location of Government Corner

This corner was originally established by the Government Land Office in 1856. D.L.Langton set a post at the corner and had reference ties to 2 bearing trees.

In 1953, the State Conservation Department used the center line of the road and the southerly extension of the fence from the north as the correct corner.

In December, 1974, Harald Nass, 52 years old at that time, had lived in the Southeast Quarter of Section 11 since 1961, said the center line - fence line intersection should be the corner.

In October, 1975, Donald Popp, 43 years old, in Section 11 all his life, also said the fence and center line of road should be on the quarter line and section line.

In 1975, we dug for this corner, but found nothing. We measured the north line of Section 14 and set a temporary north quarter corner on the center line of the road in line with the fence from the north. We set a McLeod County cast iron monument and took reference ties. There is a fence running north 1/2 way between this corner and the northeast corner of Section 14.

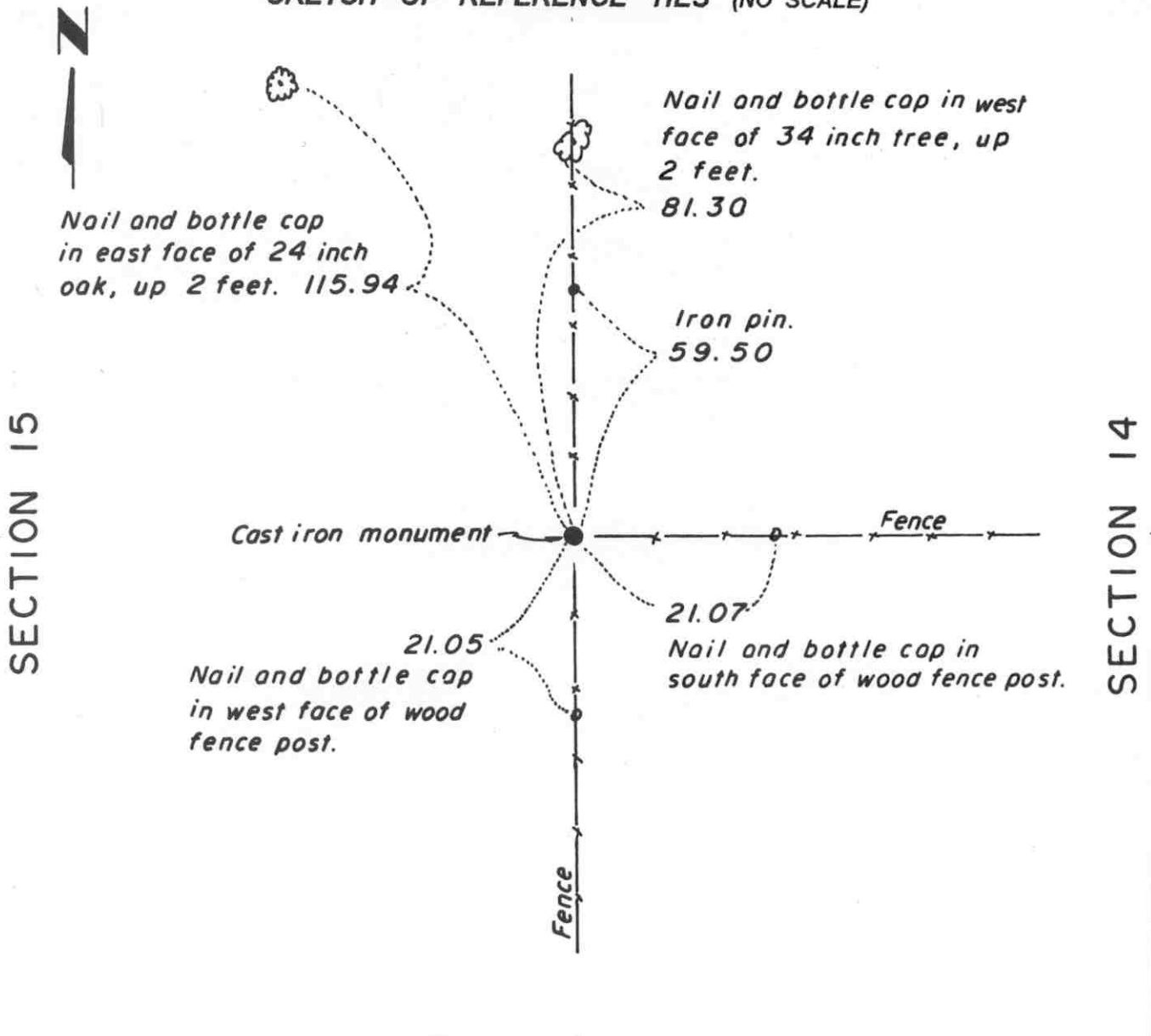
On June 27, 1988, we found the cast iron monument in good condition and found the reference ties good.

We feel the true location of the north quarter corner of Section 14 has been obliterated but has been perpetuated by the center line of the road and the fence.

Certificate of Location of Government Corner

East Quarter corner, Section 15, Township 117 North, Range 30 West

SKETCH OF REFERENCE TIES (NO SCALE)



Statement of evidence relative to this corner location on sheet 2

I hereby certify that this document was prepared by me or under my direct supervision.

Willard Pellinen
 Willard Pellinen
 McLeod County Surveyor
 License No. 9626.

Date June 9, 1995

OFFICE OF THE COUNTY RECORDER MCLEOD COUNTY, MINNESOTA

I hereby certify that this document was filed in this office at 2 o'clock P.M. on the 13th day of June 19 95.

GABRIEL OSTLE BUILDING, MCLEOD COUNTY RECORDER

_____, County Recorder

By Phyllis Sopkowiak, Deputy.

Document No. 266260

Certificate of Location of Government Corner
East Quarter Corner, Section ~~34~~, Township 117 North, Range 30 West

15

1856. D. L. Langton of the General Land Office shows this corner to be in the lake. There is an error in Langton's notes along this line. His notes show the lake to be at least a quarter mile farther south than it actually is.

1919. E.L. Higgins, surveyor, found no evidence of the corner. He surveyed the south line of the Northwest Quarter of Section 14 for Mr. Popp.

1969. Dickman Knutson, county surveyor, set an iron pipe at the intersection of fences north, south and east, which has been accepted as the quarter corner by adjoining land owners.

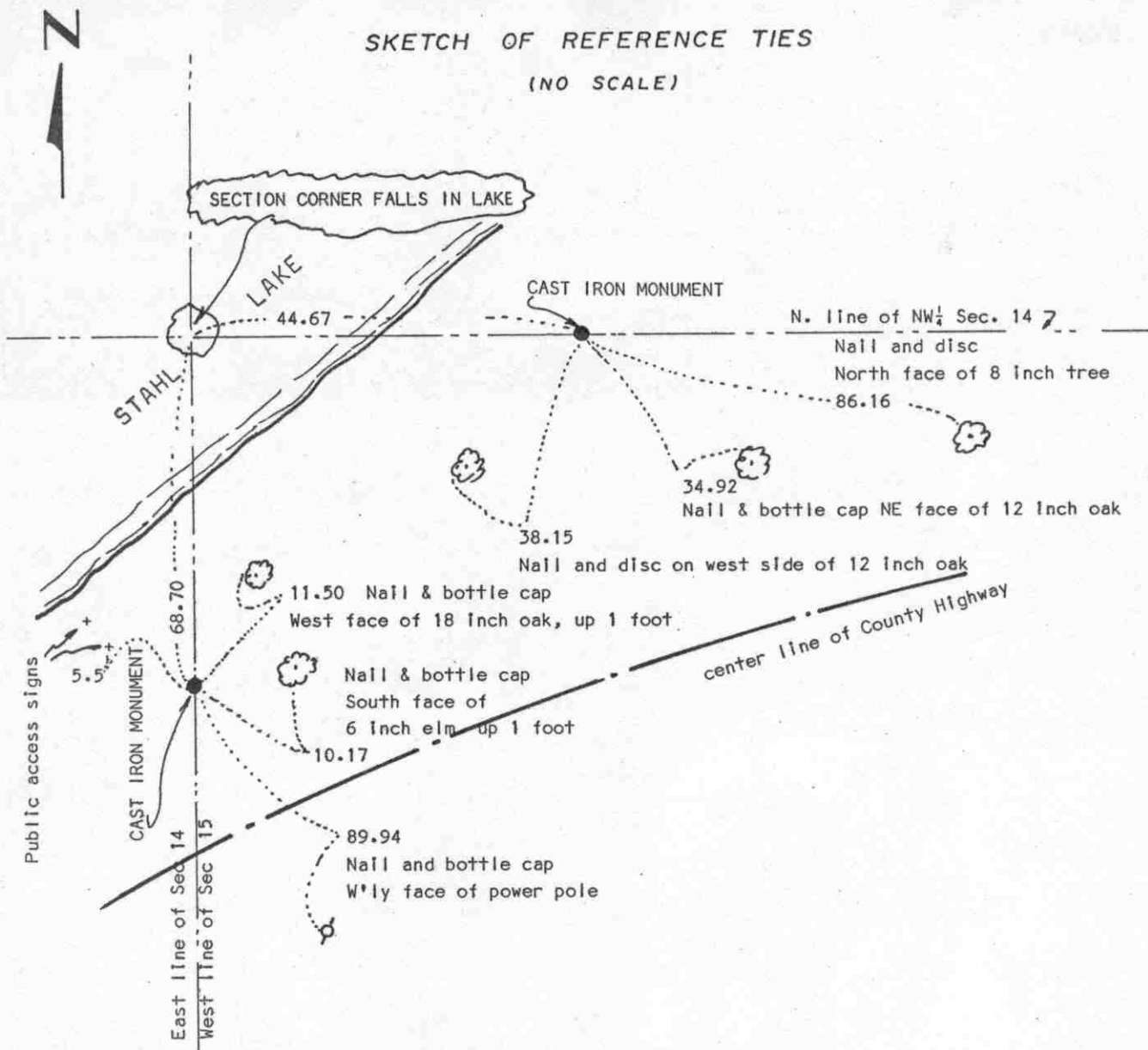
June 30, 1985. We talked with Norbert Krueger who had lived in the Southeast Quarter of Section 15 all his life. He said he thought the corner was the fence intersection. Mr Wilbur Popp, 74 years old and had lived in the Northwest Quarter of Section 14 all his life, said his father had E. L. Higgins survey the south line of the Northwest Quarter of Section 14 in 1919. The fence running east at that time was too far north so they built a new fence along the quarter line. Mr. Erwin Kohls, in the Southwest Quarter of Section 14 also said the fence is the line.

July 9, 1985. We set a McLeod County cast iron monument at the corner and took available reference ties.

Certificate of Location of Government Corner

SKETCH OF REFERENCE TIES

(NO SCALE)



Statement of evidence relative to this corner location on sheet 2

I hereby certify that this document was prepared by me or under my direct supervision.

Willard Pellinen

Willard Pellinen
McLeod County Surveyor
License No. 9626

Date 5/17/89

OFFICE OF THE COUNTY RECORDER.
MCLEOD COUNTY, MINNESOTA.

I hereby certify that this document was filed in this office at 9 o'clock A.M. on the 18th day of July, 1989.

Carmen Ostlie, County Recorder

By _____, Deputy

Document No. 229057

NORTHEAST _____ corner, Section 15, Township 117 North, Range 30 West

Certificate of Location of Government Corner

This corner was not set by the Government as it falls in the Lake.

1930 survey by E.L.Higgins shows he set a wood post in the lake at the Section corner. He found what he says looks like the Gov't witness tree from which he set the meander corner south of the lake and then set the wood post in the lake.

1965. Roy Hansen was told by Mr. Wilbur that the section corner is the wood post in the lake. Hansen surveyed in Section 11.

1966. Hansen found monumentation of old surveys in Section 11 and set up the south line of Section 11 using this monumentation.

1967. Roy Hansen found an iron pipe which Mr. Wilbur Popp and Mr. Ernest Fritze both agreed was on the east line of Section 15.

1974. We found the iron found by Mr. Hansen and found it very close to being on line between the Southeast corner of Section 15 and the East Quarter corner of Section 15. 1930 survey shows the east line to be a straight line. We used this line and intersected a line from the north quarter corner of Section 15 and found monumentation in Section 15 and Section 10 and set the northeast corner of Section 15 on the ice (in the lake). We set an iron pipe east of the lake in line with the north quarter corner of Section 14 and found an iron pipe west of the lake in line with the north quarter corner of Section 15.

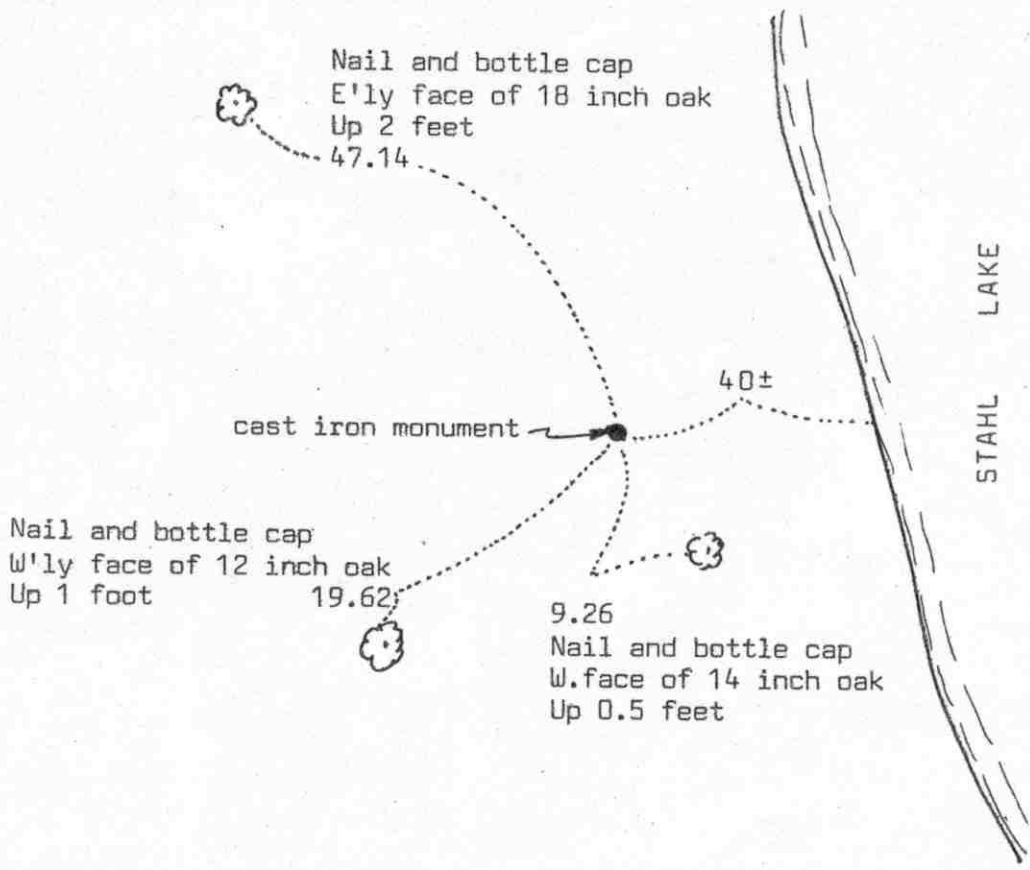
In 1976, we set McLeod County cast iron monuments in place of the iron pipes east, south and west of the lake and took reference ties to these monuments.

On February 21, 1989, we took new reference ties to these cast iron monuments.

Certificate of Location of Government Corner



SKETCH OF REFERENCE TIES
(NO SCALE)



Statement of evidence relative to this corner location on sheet SEE NE COR OF SEC 15

I hereby certify that this document was prepared by me or under my direct supervision.

Willard Pellinen

Willard Pellinen
McLeod County Surveyor
License No. 9626

Date 5/17/89

OFFICE OF THE COUNTY RECORDER
MCLEOD COUNTY, MINNESOTA.

I hereby certify that this document was filed in this office at 9 o'clock A.M. on the 18th day of July, 1989.

Carmin Ostlie, County Recorder

By _____, Deputy

Document No. 229058

NORTHEAST corner, Section 15, Township 117 North, Range 30 West

Certificate of Location of Government Corner

This corner was not set by the Government as it falls in the Lake.

1930 survey by E.L.Higgins shows he set a wood post in the lake at the Section corner. He found what he says looks like the Gov't witness tree from which he set the meander corner south of the lake and then set the wood post in the lake.

1965. Roy Hansen was told by Mr. Wilbur that the section corner is the wood post in the lake. Hansen surveyed in Section 11.

1966. Hansen found monumentation of old surveys in Section 11 and set up the south line of Section 11 using this monumentation.

1967. Roy Hansen found an iron pipe which Mr. Wilbur Popp and Mr. Ernest Fritze both agreed was on the east line of Section 15.

1974. We found the iron found by Mr. Hansen and found it very close to being on line between the Southeast corner of Section 15 and the East Quarter corner of Section 15. 1930 survey shows the east line to be a straight line. We used this line and intersected a line from the north quarter corner of Section 15 and found monumentation in Section 15 and Section 10 and set the northeast corner of Section 15 on the ice (in the lake). We set an iron pipe east of the lake in line with the north quarter corner of Section 14 and found an iron pipe west of the lake in line with the north quarter corner of Section 15.

In 1976, we set McLeod County cast iron monuments in place of the iron pipes east, south and west of the lake and took reference ties to these monuments.

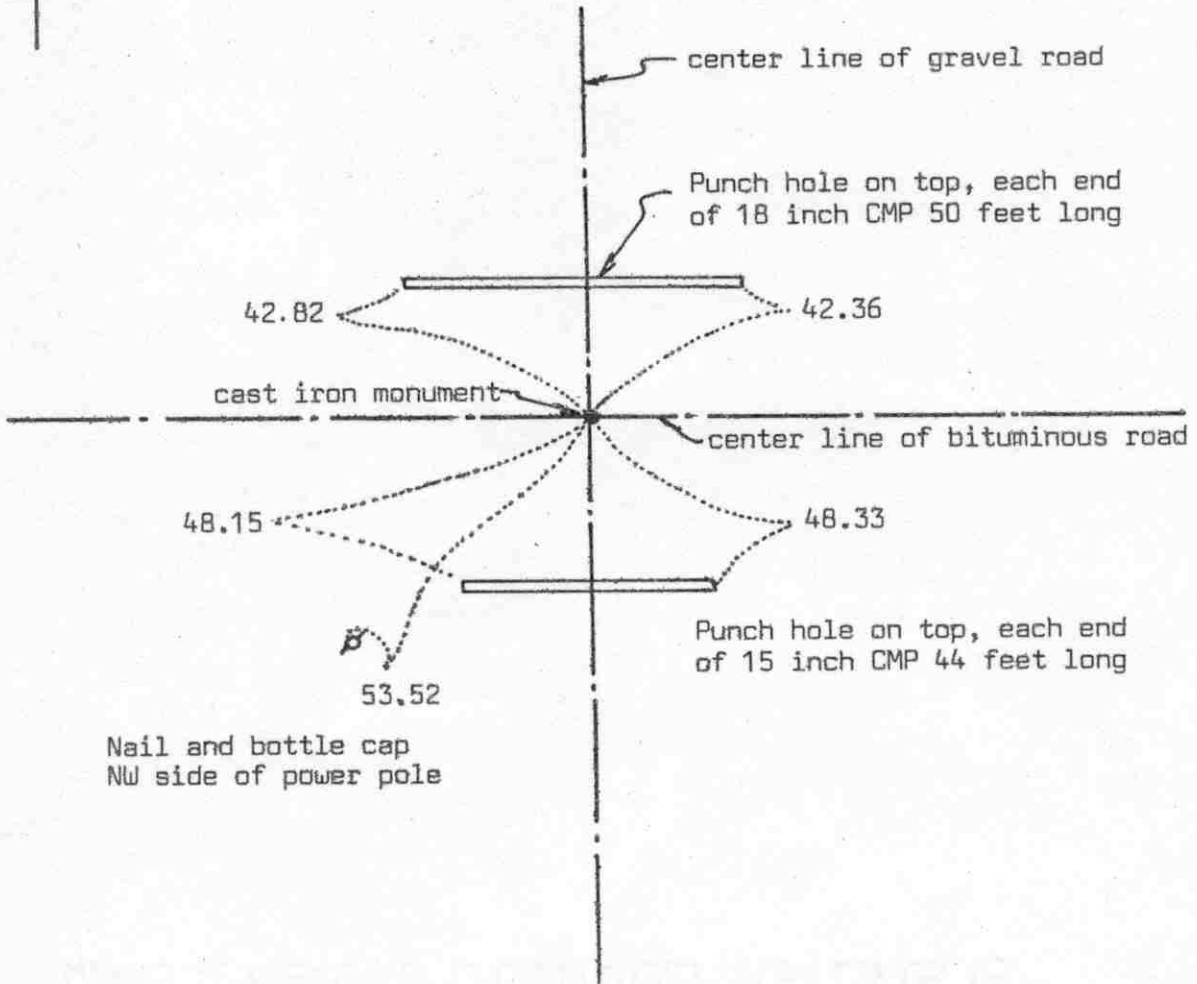
On February 21, 1989, we took new reference ties to these cast iron monuments.

Certificate of Location of Government Corner



SKETCH OF REFERENCE TIES

(NO SCALE)



Statement of evidence relative to this corner location on sheet 2

I hereby certify that this document was prepared by me or under my direct supervision.

Willard Pellinen

Willard Pellinen
McLeod County Surveyor
License No. 9626

Date 3/18/89

OFFICE OF THE COUNTY RECORDER
MCLEOD COUNTY, MINNESOTA.

I hereby certify that this document was filed in this office at 2 o'clock P.M. on the 30th day of March 19 89.

Carmer Ostlie, County Recorder

By _____, Deputy

Document No. 227479

Certificate of Location of Government Corner

This corner was originally set by D.L.Langton of the Government Land Office in 1856. He set a post and had reference ties to 2 bearing trees.

1931 survey notes by E.L.Higgins shows a "stake" at the corner.

In September, 1966, Roy Hansen, surveyor, found a $\frac{1}{2}$ inch diameter iron pipe at the center line intersection of the roads and used it as the correct quarter corner.

In 1976, we found the iron pipe, took reference ties and dug, but found nothing else.

On August 26, 1976, we set a McLeod County cast iron monument in place of the iron pipe.

On June 27, 1988, we found the monument in good condition but only one reference tie remaining. We took additional reference ties.

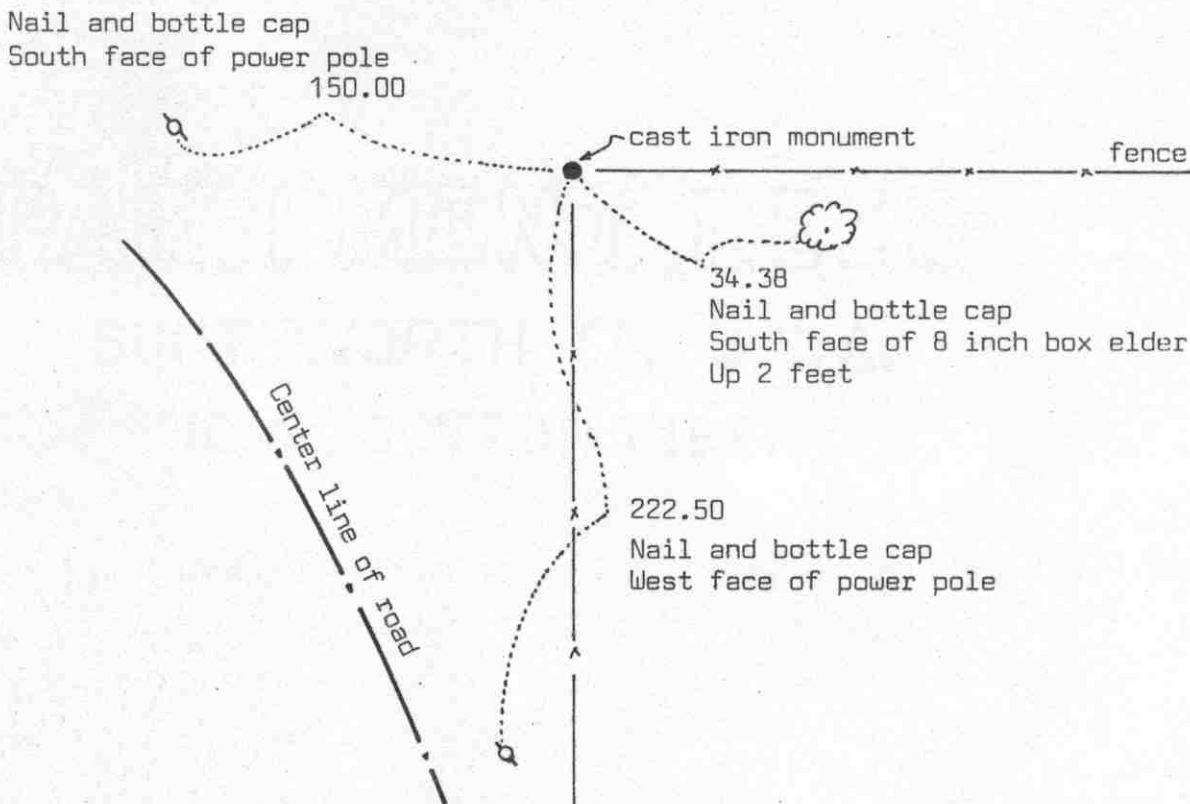
We don't know who set the iron pipe, but we will accept it as the correct quarter corner because there is no evidence to the contrary.

Certificate of Location of Government Corner



SKETCH OF REFERENCE TIES

(NO SCALE)



Statement of evidence relative to this corner location on sheet 2

I hereby certify that this document was prepared by me or under my direct supervision.

Willard Pellinen

Willard Pellinen
McLeod County Surveyor
License No. 9626

Date 5/13/89

OFFICE OF THE COUNTY RECORDER
MCLEOD COUNTY, MINNESOTA.

I hereby certify that this document was filed in this office at 9 o'clock A.M. on the 18th day of July 1989.

Armen Ostlie, County Recorder

By _____, Deputy

Document No. 229059

EAST QUARTER corner, Section 16, Township 117 North, Range 30 West

Certificate of Location of Government Corner

This corner was originally set by the government in 1855. A.W.Runyon set a post with reference ties to 2 bearing trees.

1919. E.L.Higgins used the corner fence post as the corner, said to be at the original quarter corner. He had a distance of 2609 feet to the southeast corner and a distance of 2547.6 feet to a stone near the center of section 16.

April 26, 1974. We found a small stone, 3 inches by 2 inches by 8 inches, set on end by the rotted corner fence post. We found a stone near the center of section, 4 inches by 3 inches by 12 inches, set on end. We measured 2545.65 feet from the stone at the east quarter corner to the stone near the center of the section. We measured 2610.57 feet to the southeast corner of Section 16. We set a McLeod County cast iron monument and took reference ties.

We accept the stone and old corner fence post as having perpetuated the correct location of the east quarter corner.

February 21, 1989. We found the cast iron monument in good condition and took new reference ties. Old ties destroyed.

Certificate of Location of Government Corner

NORTHEAST corner, Section 16, Township 117 North, Range 30 West

SKETCH OF REFERENCE TIES (NO SCALE)



SECTION 9

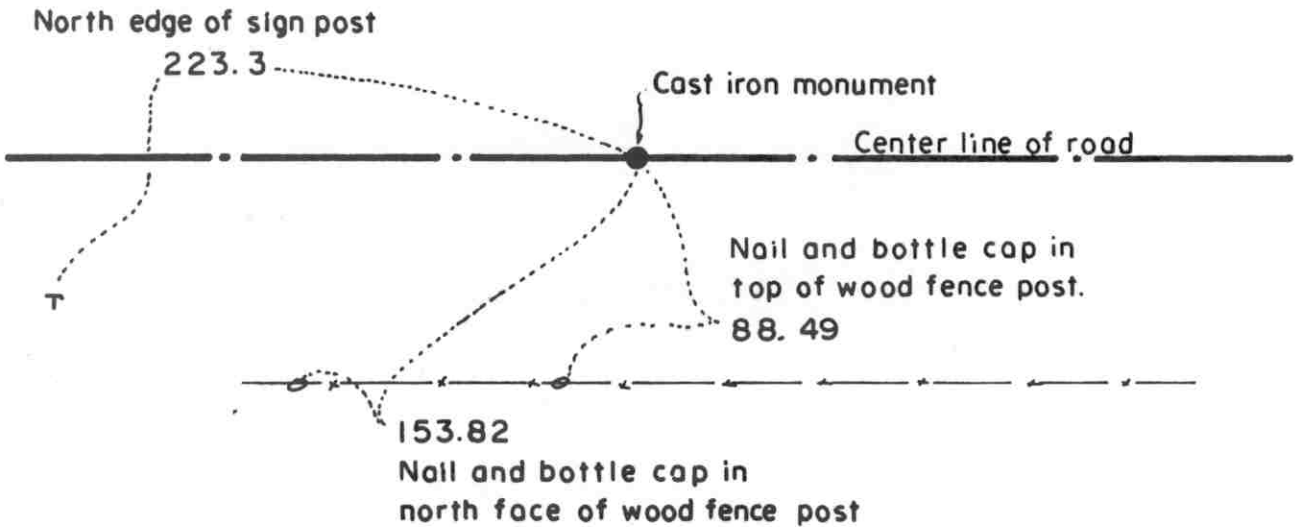
SECTION 10

2675.12 feet to N1/4 corner of Sec. 15.

2454.73 feet to N1/4 corner of Sec. 16.

2622.81 feet to E 1/4 corner of Sec. 16.

2619.58 feet to E1/4 corner of Sec. 9.



SECTION 16

SECTION 15

Statement of evidence relative to this corner location on sheet 2

I hereby certify that this document was prepared by me or under my direct supervision.

Willard Pellinen
Willard Pellinen
McLeod County Surveyor
License No. 9626.

Date June 9, 1995

OFFICE OF THE COUNTY RECORDER
MCLEOD COUNTY, MINNESOTA

I hereby certify that this document was filed in this office at 2 o'clock P. M. on the 13th day of June 19 95.

GARREN OSTLIE MILDORF, MCLEOD COUNTY RECORDER, County Recorder

By Shyllis Sopkowiak, Deputy.

Document No. 266261

Certificate of Location of Government Corner
Northeast Corner, Section 16 Township 117 North, Range 30 West

1856. D. L. Langton of the General Land Office of the General Land Office established this corner. He set a post and marked two 12 inch elms and two 15 inch lindens for bearing trees.

1968. Dickman Knutson, county surveyor, found an iron pipe at this corner at the center line of an east-west road. This was within 11 feet of being on line between the east quarter corner of Section 16 and the east quarter corner of Section 9, but about 79 feet south of a straight line between the north quarter corner of Section 16 and the north quarter corner of Section 15. No property lines running north or south from this corner.

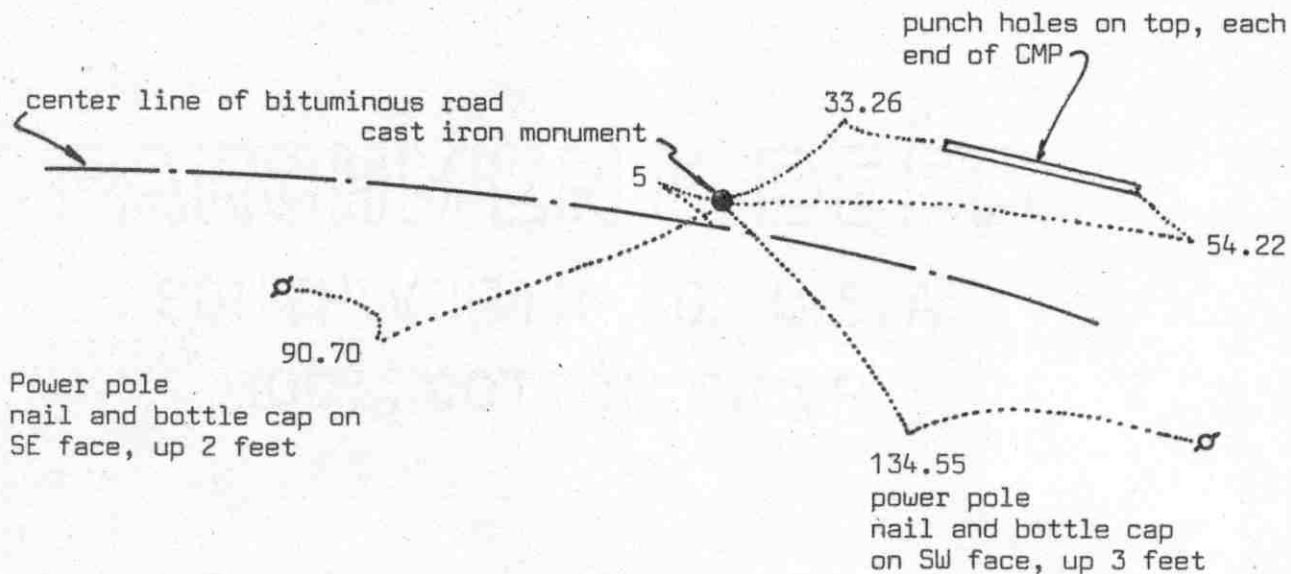
March 12, 1985. We reset a spike at the computed location of the corner and took available reference ties.

July 9, 1985. We set a McLeod County cast iron monument at the corner. We set the monument flush with the surface of the bituminous road with a half inch diameter iron pipe beneath the monument.

Certificate of Location of Government Corner



SKETCH OF REFERENCE TIES
(NO SCALE)



Statement of evidence relative to this corner location on sheet 2

I hereby certify that this document was prepared by me or under my direct supervision.

Willard Pellinen
Willard Pellinen
McLeod County Surveyor
License No. 9626

Date 3/1/89

OFFICE OF THE COUNTY RECORDER
MCLEOD COUNTY, MINNESOTA.

I hereby certify that this document was filed in this office at 9 o'clock A. M. on the 16th day of March, 1989.

Carmen Potlie, County Recorder
By _____, Deputy

Document No. 227286

Certificate of Location of Government Corner

This corner was originally set in 1856 by D.L.Langton of the Government Land Office. He set a post and had ties to 2 bearing trees.

On May 23, 1972, we found an iron pin down $2\frac{1}{2}$ feet below the road surface. This iron pin was 5 feet north of the center line of the road on the easterly extension of the center line tangent from the west. We measured the north line of Section 16 and found the 1/16 line fence in the Southwest Quarter of Section 9 within 4 feet of being on a split between the quarter corner and the northwest corner of Section 16. We found a fence running south in the northwest quarter of Section 16, a distance of 660 feet east of the northwest corner of Government Lot 4 in Section 16 as per deed description.

On August 31, 1973, we set cast iron monument at the location of the found iron pin, and took reference ties.

On June 28, 1982, we found the cast iron monument in good condition but all the reference ties had been destroyed. The monument was down 6 inches below the road surface so we set a rail road spike over the monument and took new reference ties.

On June 27, 1988, we found the railroad spike and the reference ties still o.k.

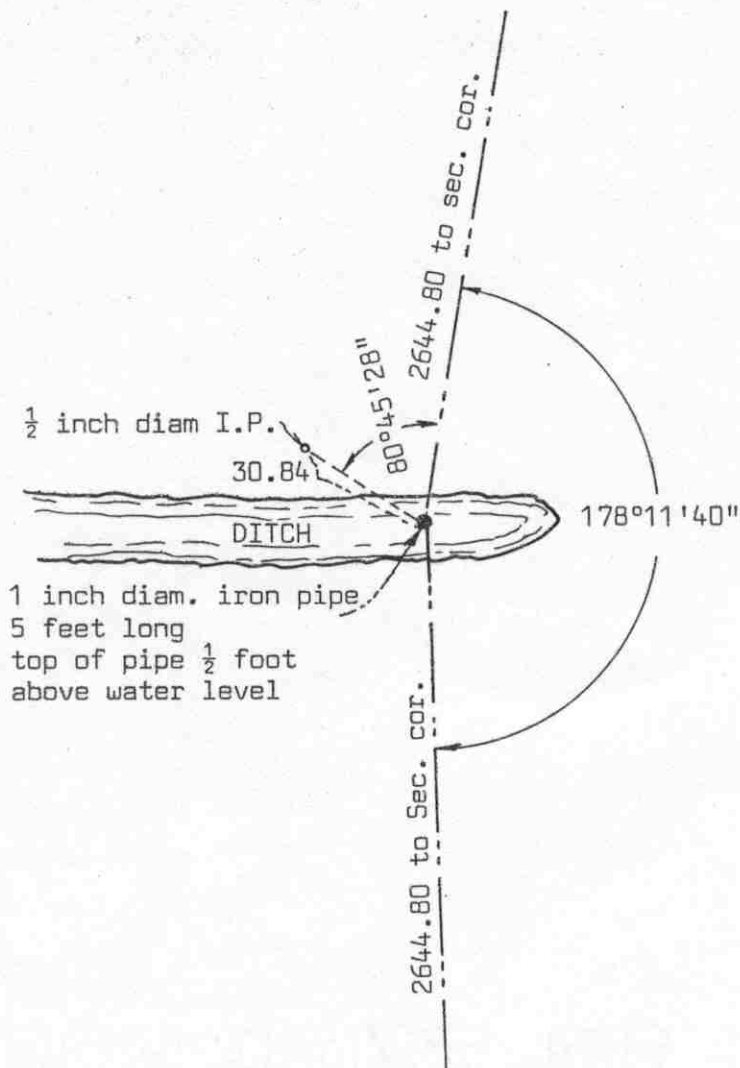
We accept the location of the found iron pin as the true north quarter corner of Section 16. There are no property lines running north or south from this corner, but the occupation lines to the west of this corner seem to fit deed descriptions.

Certificate of Location of Government Corner



SKETCH OF REFERENCE TIES

(NO SCALE)



1 inch diam. iron pipe
5 feet long
top of pipe $\frac{1}{2}$ foot
above water level

Statement of evidence relative to this corner location on sheet 2

I hereby certify that this document was prepared by me or under my direct supervision.

Willard Pellinen

Willard Pellinen
McLeod County Surveyor
License No. 9626

Date 7/16/89

OFFICE OF THE COUNTY RECORDER
MCLEOD COUNTY, MINNESOTA.

I hereby certify that this document was filed in this office at 2 o'clock P.M. on the 27th day of July, 19 89.

Carmen Ostlie, County Recorder

By _____, Deputy.

Document No. 229186

EAST QUARTER

corner, Section 17, Township 117 North, Range 30 West

Certificate of Location of Government Corner

This corner was not set in the original government survey. Corner fell in a lake which is now drained.

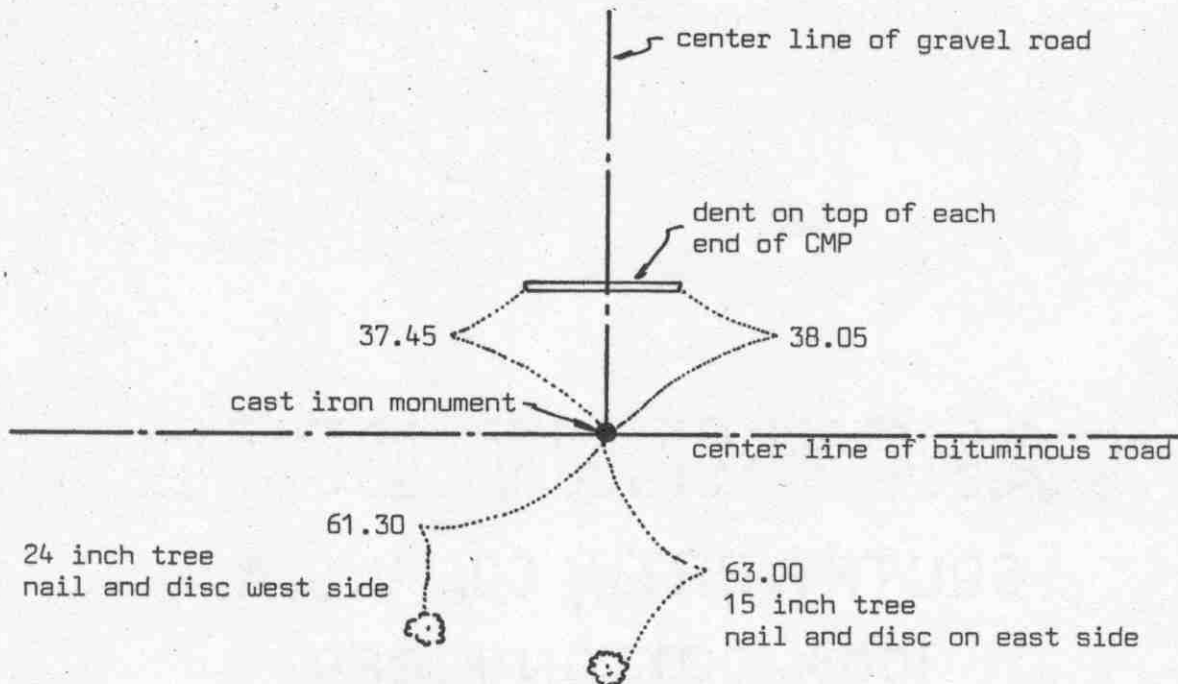
On June 28, 1982, we measured the east line of Section 17 and set the quarter corner half way between the section corners, on line with the southeast corner and an axle which we found 1055.14 feet north of the southeast corner. We don't know who set the axle, but it is within a foot of being the government distance to the meander corner from the southeast corner. Mr. Fred Kuehl, 50 ±, said his grandfather bought Government Lots 6, 7 and 8 from the railroad. He said the axle is on the section line. This makes the quarter corner about 42 feet west of a straight line between the section corners, but this also makes the field line running north-south a quarter mile north of the quarter corner on the section line. A stone we found near the center of section 16, which was used by E.L.Higgins in 1919 as the center is within 2 feet of being the center of the section. The corner also falls in the center of an east-west ditch which Mr. Kuehl says is on the east-west quarter line.

On February 21, 1989, we found the iron pipe o.k.

Certificate of Location of Government Corner



SKETCH OF REFERENCE TIES
(NO SCALE)



Statement of evidence relative to this corner location on sheet 2

I hereby certify that this document was prepared by me or under my direct supervision.

Willard Pellinen

Willard Pellinen
McLeod County Surveyor
License No. 9626

Date 3/21/89

OFFICE OF THE COUNTY RECORDER
MCLEOD COUNTY, MINNESOTA.

I hereby certify that this document was filed in this office at 9 o'clock A. M. on the 16th day of March, 1989.

Carmon Postle, County Recorder
By _____, Deputy

Document No. 227287

Certificate of Location of Government Corner

This corner was originally set in 1856 by D.L.Langton of the Government Land Office. He set a post and had reference ties to 4 bearing trees.

1958 survey by the Conservation Department shows a spike at this corner.

On May 23, 1972, we found a spike down 4 inches below the road surface and a wood stake down $1\frac{1}{2}$ feet below the spike.

On August 31, 1973, we set a McLeod County cast iron monument in place of the wood stake and took reference ties.

On June 27, 1988, we found the cast iron monument in good shape and the reference ties good.

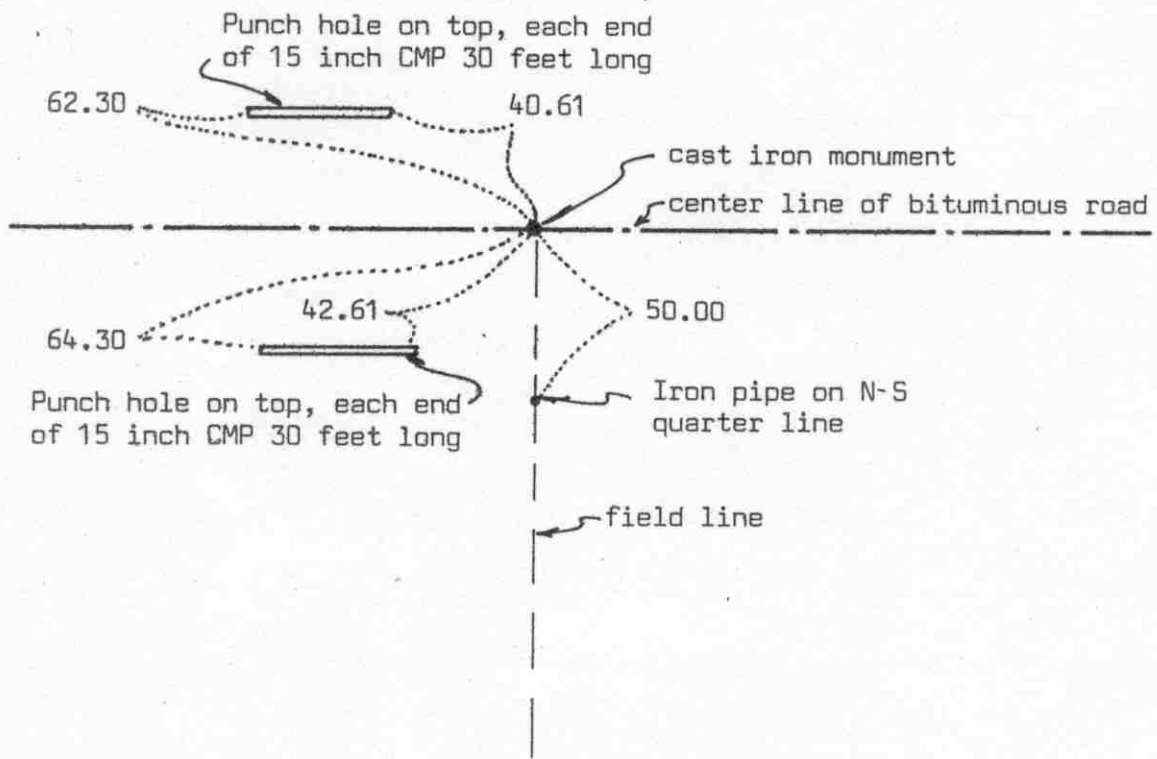
We feel the center line of the road and the wood stake has perpetuated the correct location of the northeast corner of Section 17.

Certificate of Location of Government Corner



SKETCH OF REFERENCE TIES

(NO SCALE)



Statement of evidence relative to this corner location on sheet 2

I hereby certify that this document was prepared by me or under my direct supervision.

Willard Pellinen
 Willard Pellinen
 McLeod County Surveyor
 License No. 9626
 Date 3/21/89

OFFICE OF THE COUNTY RECORDER
 MCLEOD COUNTY, MINNESOTA.

I hereby certify that this document was filed in this office at 2 o'clock P.M. on the 30th day of March, 19 89.

Carmen J. Jellie, County Recorder
 By _____, Deputy
 Document No. 227480

Certificate of Location of Government Corner

This corner was originally set by D.L.Langton of the Government Land Office in 1856. He set a post and had reference ties to 2 bearing trees.

1931 survey notes by E.L.Higgins shows a "steel corner" at the quarter corner and a distance of 2740.8 feet to the northwest corner of Section 17.

On March 14, 1979 we measured the north line of Section 17 and set a temporary north quarter corner on the center line of the road and in line with a field line south.

On June 18, 1979, we dug for the corner, John Tupa from Hutchinson with a backhoe. We found a 10 inch spike down 2 feet below the road surface. We took reference ties and dug deeper and found another 10 inch spike down 4 feet below the surface directly below the first spike. We dug some more but found nothing else. Our distance to the northwest corner is about 2 feet shorter than 1931 distance.

On August 10, 1979 we set a McLeod County cast iron monument.

On June 27, 1988, we found the monument in good condition but no reference ties remaining. We took new reference ties.

We don't know who set the spikes, probably the county highway department, but there being no evidence to the contrary, we accept the spikes as marking the correct north quarter corner of Section 17.

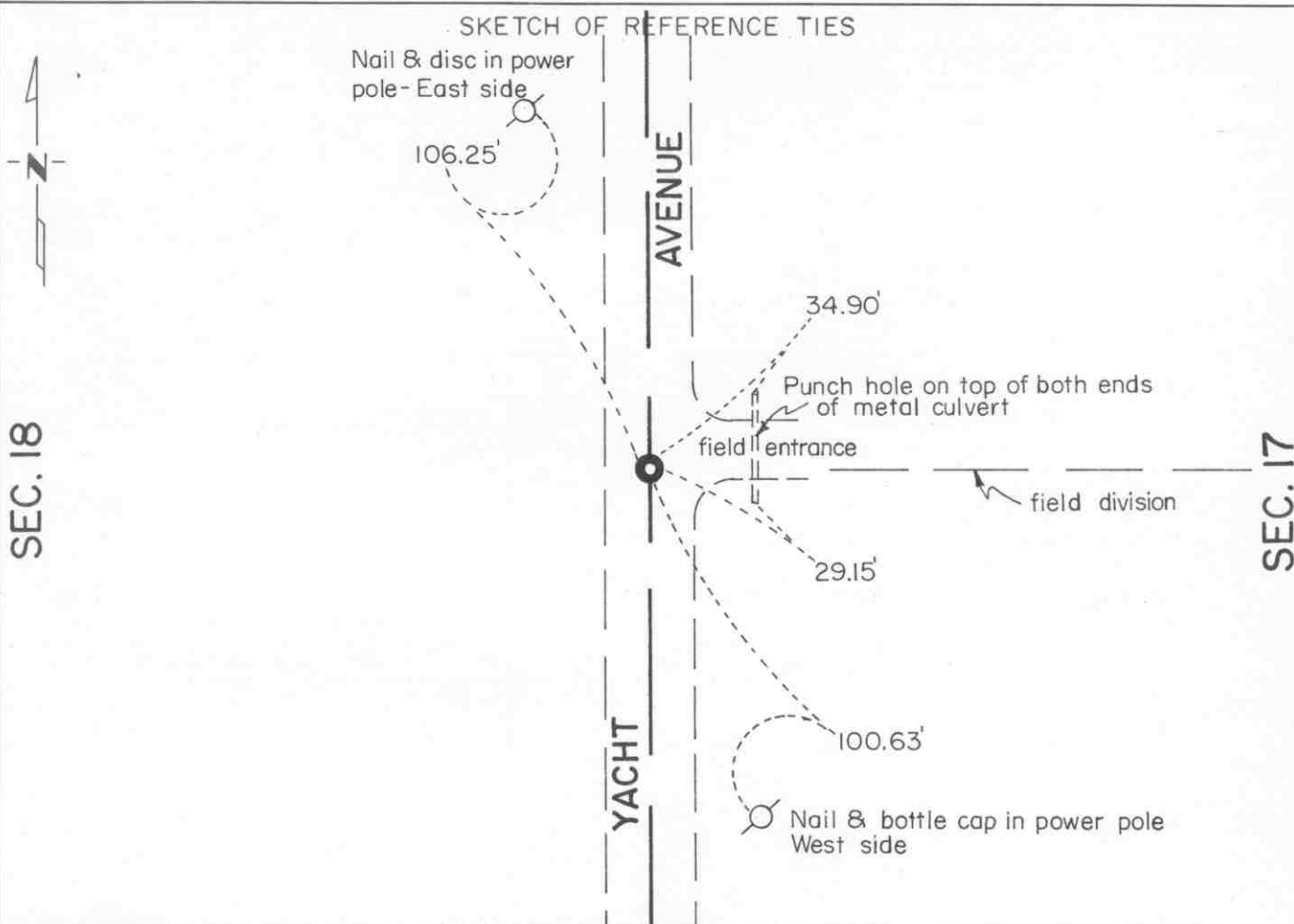
CERTIFICATE OF LOCATION OF GOVERNMENT CORNER

East Quarter Corner of Section 18, Township 117 N, Range 30 W, 5 th P.M.

STATE OF MINNESOTA, County of McLeod

At the corner location shown on the sketch:

- On May 14, 1993 found a cast iron monument about 8" below road surface
DATE
- left monument as found, lowered monument, removed monument (explain)
- On _____ placed a _____
DATE



Statement of evidence relative to this corner location is on back of page.

I hereby certify that this document and the data contained herein was prepared by me or under my direct supervision.

Robert G. Jones
SIGNATURE

Nov. 28, 1995
DATE

Registration No. 11864

- Land Surveyor, Professional Engineer
- County Surveyor, County Engineer

OFFICE OF THE COUNTY RECORDER

County of McLeod

I hereby certify that this document was filed in the Co. Recorders office at 9 A. .M. on the 29th day of November A.D., 1995

County Recorder Carmen Astle Mulder

By Phyllis Sopkowiak, Deputy

DOCUMENT NO. 269548

Statement of Evidence:

East Quarter Corner Section 18, T 117 N, R 30 W

- 1856 - The original Public Land Survey was completed by Denis S. Langton. A charred stake was set in a dirt mound and locust seeds were planted at the corners of the mound to mark the corner.
- 1899 - E. L. Higgins, McLeod County Surveyor, shows a distance of 2637 feet to the southeast corner of Section 18. He did not indicate whether anything was found or set at the corner.
- 1967 - Survey notes by Ron Hansen show a distance of 2636.4 ft. to the southeast corner of Section 18.
- 1979 - Willard Pellinen, McLeod County Surveyor, dug for the corner at the centerline of a north/south road an approximate distance of the 2637 ft. from the southeast corner of the section. A 3" diameter iron pipe was found at the center of the road and about in line with a field division to the east. It was about 3 feet below the surface of the road. A cast iron monument was set over the pipe so that the top was about 4" below the road surface. Reference ties were set.
- 1989 - Willard Pellinen recovered the cast iron monument.
- 1993 - A Mn/DOT survey crew, headed by Gene East, recovered the cast iron monument about 8" below the road surface and checked the reference ties. It was located at the centerline of a north/south road and about in line with a field division to the east.

The cast iron monument is accepted as the corner location because it fits long standing occupation lines and it fits the old survey distances very well. It is 4.71 ft. west and 1.72 ft. north of the lost location.

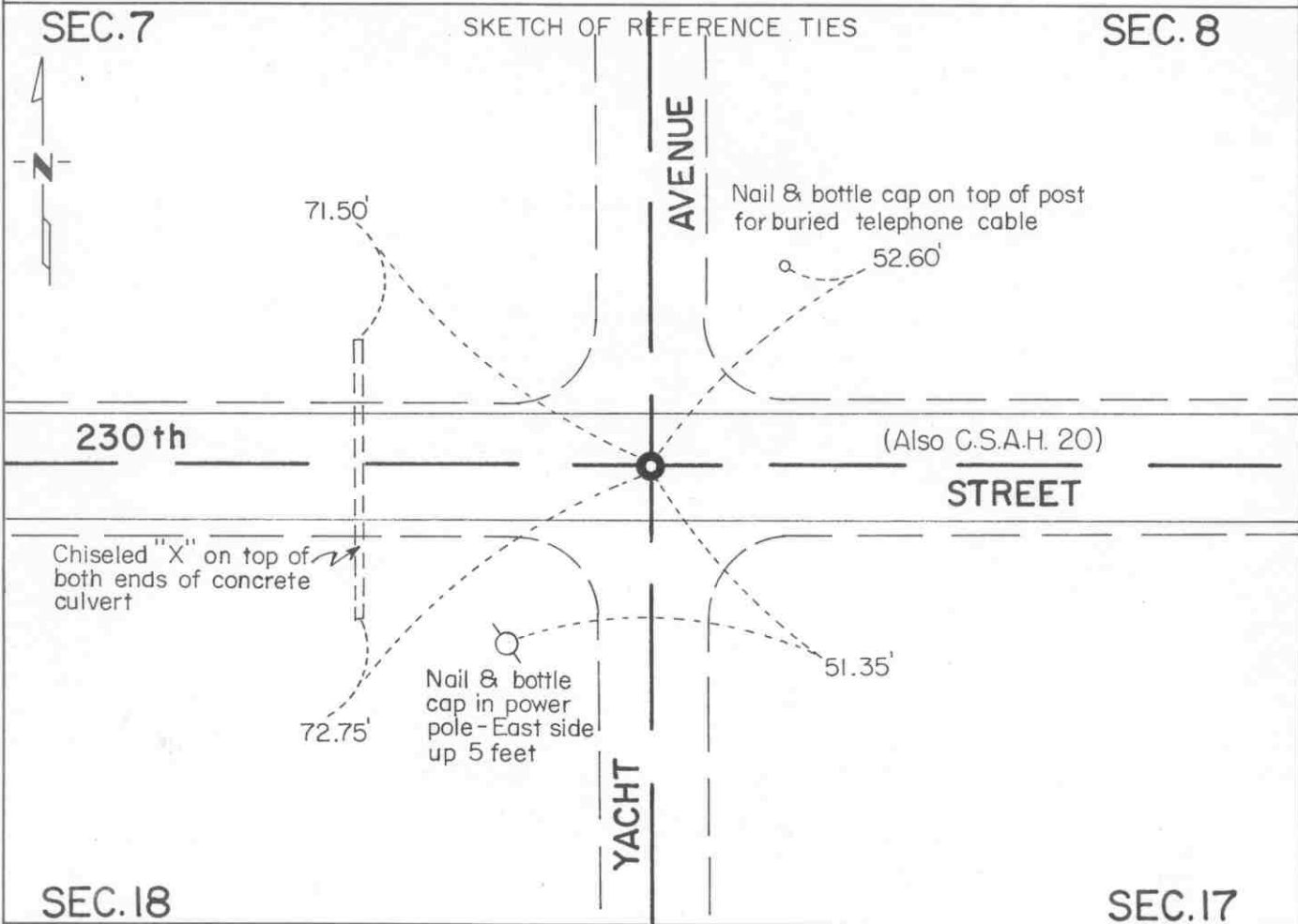
For additional information, contact the Mn/DOT Surveys Section at Willmar, Mn 56201.

CERTIFICATE OF LOCATION OF GOVERNMENT CORNER

Northeast Corner of Section 18, Township 117 N, Range 30 W, 5th P.M.
 STATE OF MINNESOTA, County of McLeod

At the corner location shown on the sketch:

- On May 14, 1995³ found a cast iron monument at road surface
DATE
- left monument as found, lowered monument, removed monument (explain)
- On _____ placed a _____
DATE



Statement of evidence relative to this corner location is on back of page.

I hereby certify that this document and the data contained herein was prepared by me or under my direct supervision

Robert C. Jones
SIGNATURE Nov. 28, 1995
DATE

Registration No. 1864
 Land Surveyor, Professional Engineer
 County Surveyor, County Engineer

OFFICE OF THE COUNTY RECORDER

County of McLeod

I hereby certify that this document was filed in the Co. Recorders office at 9 A. .M. on the 29th day of November A.D., 1995

County Recorder Carmen Cathie Mulder

By Phyllis Szykowiak, Deputy

DOCUMENT NO. 269547

Statement of Evidence:

Northeast Corner Section 18, T 117 N, R 30 W

- 1856 - The original Public Land Survey was completed by Denis S. Langton. A charred stake was set in a mound of dirt and locust seeds were planted at the corners of the mound.
- 1899 - E. L. Higgins, McLeod County Surveyor, found a stone at the corner. His survey shows the distance to the north quarter corner of the section to be 2663 feet.
- 1931 - E. L. Higgins found the stone and placed a steel corner. He showed a distance of 2740.8 feet to the north quarter corner of Section 17.
- 1979 - Willard Pellinen, McLeod County Surveyor, measured the north lines of Sections 17 and 18 and set a temporary position for the northeast corner of Section 18 at the intersection of the centerlines of roads north, south, east and west.

Later in the year John Tupa from Hutchinson was hired to dig for the corner with a backhoe. A 10" diameter stone was found 2 ft. below the road surface. The stone was referenced out and the excavation was made deeper. Another stone was found directly below the first found stone at a depth of 5 ft. below the road surface. There was a 1/2" diameter iron pipe beside the lowest stone. A 5" long spike was set at the surface above the found stones and reference ties were set.

Later in the year the spike was replaced with a cast iron monument.

- 1985 - Willard Pellinen measured to the north quarter corner of Section 17 and found the distance to be 2738.22 feet as compared to Higgins' distance of 2740.8 feet.
- 1989 - Willard Pellinen measured to the north quarter corner of Section 18 and found the distance to be 2661.68 feet as compared to Higgins' distance of 2663 feet.
- 1993 - A Mn/DOT survey crew, headed by Gene East, recovered the cast iron monument at the road surface. It was located at the centerlines of roads north, south, east, and west.

The cast iron monument is accepted as the corner location because it fits long standing occupation lines, it fits old survey distances, and it perpetuates the location of older monuments that have marked the corner for at least 96 years.

For additional information, contact the Mn/DOT Surveys Section at Willmar, Mn 56201.

CERTIFICATE OF LOCATION OF GOVERNMENT CORNER

North Quarter Corner of Section 18, Township 117 N, Range 30 W, 5th P.M.

STATE OF MINNESOTA, County of McLeod

At the corner location shown on the sketch:

- On May 14, 1995³ found a cast iron monument at road surface
DATE
- left monument as found, lowered monument, removed monument (explain)
- On _____ placed a _____
DATE

SKETCH OF REFERENCE TIES

SEC. 7



230 th

(Also C.S.A.H. 20)

STREET

47.15'

Nail & disc in power pole- West side

59.60'

field entrance

Nut on clamp on top of West end of metal culvert

SEC. 18

Statement of evidence relative to this corner location is on back of page.

I hereby certify that this document and the data contained herein was prepared by me or under my direct supervision.

Robert G. Jones
SIGNATURE

Nov. 28, 1995
DATE

Registration No. 11864

- Land Surveyor, Professional Engineer
- County Surveyor, County Engineer

OFFICE OF THE COUNTY RECORDER

County of McLeod

I hereby certify that this document was filed in the Co. Recorders office at 9 A. .M. on the 29th day of November A.D., 1995

County Recorder Carmen Cathie Mulder

By Phyllis Sopotowick, Deputy

DOCUMENT NO. 269549

Statement of Evidence:

North Quarter Corner Section 18, T 117 N, R 30 W

- 1856 - The original Public Land Survey was completed by Denis S. Langton. A charred stake was set in a dirt mound and locust seeds were planted at the corners of the mound.
- 1899 - E. L. Higgins, McLeod County Surveyor, found a stone at the corner.
- 1979 - Willard Pellinen, McLeod County Surveyor, set a temporary quarter corner according to Higgins' 1899 survey distance.

Later in the year, John Tupa from Hutchinson was hired to dig for the corner with a backhoe. A 10" diameter stone was found in an old roadbed 5 ft. below the surface of the road. Reference ties were set and a spike was set over the stone near the road surface.

Later in the year, a cast iron monument was set at the road surface to replace the spike.

- 1987 - Willard Pellinen measured the distances from the quarter corner to the section corners on either side. The distance to the northwest corner agreed with Higgins' distance within 0.24 feet and the distance to the northeast corner agreed with Higgins' distance within 1.4 feet.
- 1988 - Willard Pellinen recovered the cast iron monument and the reference ties all in good condition.
- 1993 - A Mn/DOT survey crew, headed by Gene East, recovered the cast iron monument at the road surface and checked the reference ties. The monument is located at the centerline of an east/west road and in line with a fence line to the north.

The cast iron monument is accepted as the corner location because it appears to be the perpetuation of the location of a stone that was found by Higgins in 1899, it fits the old survey distances, and it fits long standing occupation lines. It is also located 1.32 ft. east and 0.55 ft. south of the lost location.

For additional information, contact the Mn/DOT Surveys Section at Willmar, Mn 56201.

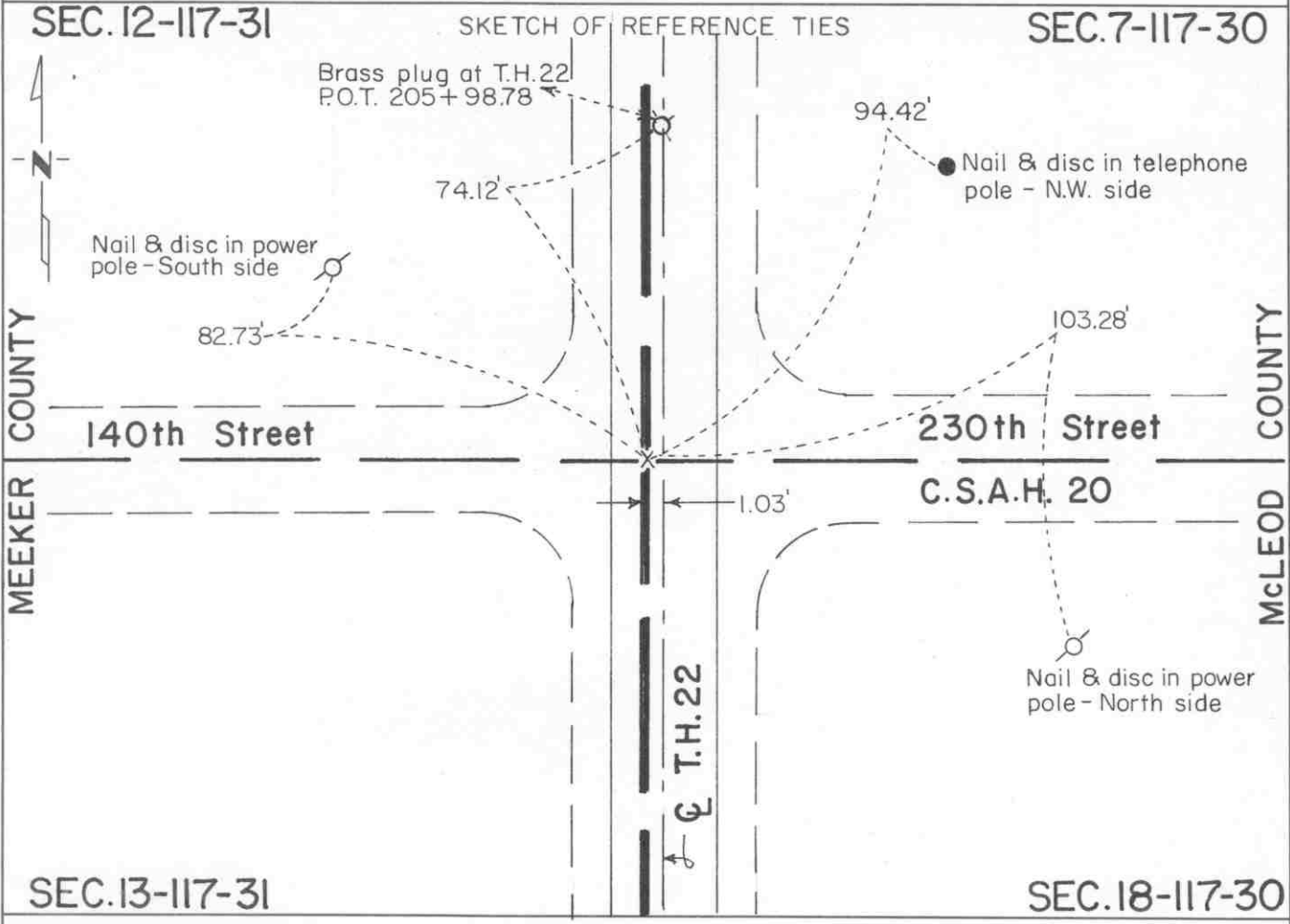
CERTIFICATE OF LOCATION OF GOVERNMENT CORNER

Northwest Corner of Section 18, Township 117 N, Range 30 W, 5th P.M.

STATE OF MINNESOTA, County of McLeod

At the corner location shown on the sketch:

- On May 14, 1993 found a chiseled "X" in the concrete pavement surface
DATE
- left monument as found, lowered monument, removed monument (explain)
- On _____ placed a _____
DATE



Statement of evidence relative to this corner location is on back of page.

I hereby certify that this document and the data contained herein was prepared by me or under my direct supervision.

Robert Jones
SIGNATURE

Nov. 20, 1995
DATE

Registration No. 11864

Land Surveyor, Professional Engineer

County Surveyor, County Engineer

OFFICE OF THE COUNTY RECORDER
County of McLeod

I hereby certify that this document was filed in the Co. Recorders office at 9 A. .M. on the 29th day of November A.D., 1995

County Recorder Carmen A. Mulder

By Phyllis Sopkowiak, Deputy

DOCUMENT NO. 269550

Statement of Evidence:

- 1855 - The range line between Range 30 West and Range 31 West was completed by John Ryan. A wood post was set over a deposit of charcoal in a dirt mound as per the instructions.
- 1880 - L. E. Dudley surveyed the east line of Section 13-117-31 (west line of Section 18-117-31). His notes show distances but do not show a monument at the corner.
- 1899 - E. L. Higgins, McLeod County Surveyor, surveyed in Section 18 and set a stone to mark this corner. It was set at the intersection of the west and north lines of Section 18. These lines were projected from stones found at the NE corner, N 1/4 corner, SW corner, and the W 1/4 corner. This position agreed with proportionate distances along said north and west lines.
- 1944 - The Minnesota Highway Department right of way map shows the corner to be 1.0 foot west of T.H. 22 P.O.T. 206+74.1. It was at or near the centerline of a north/south road and the centerline of an east/west road.
- 1954 - Final MHD construction plans for T.H. 22 show the corner at the same location as the 1944 MHD right of way map.
- 1973 - Willard Pellinen, McLeod County Surveyor, set the corner according to information shown on the MHD right of way map. Brass plugs were recovered at T.H. 22 P.I. 206+00 and at P.C. 223+00. An "X" was chiseled in the concrete pavement 1.0 foot west of P.O.T. 206+74.1.
- 1979 - John W. Drake, Jr., Registered Land Surveyor with Mn/DOT, found the chiseled "X" at the location noted by Willard Pellinen in 1973. He filed a Certificate of Location of Government Corner (Document No. 196643) with the Meeker County Recorder on July 31, 1980.
- 1989 - Willard Pellinen, McLeod County Surveyor, recovered the chiseled "X" at the same location as found in 1973 and 1979.
- 1993 - A Mn/DOT survey crew, headed by Gene East, recovered the chiseled "X" at the same location as found in 1973, 1979, and 1989. The reference ties, set in 1979, were checked and found to be good.

The chiseled "X" is located 1.03 ft. west of T.H. 22 P.O.T. 206+72.94. The in place alignment stationing has been adjusted by 1.2 feet to fit the found monumentation.

The chiseled "X" is accepted as the corner location because it has been used for at least 51 years and probably longer. It closely fits long standing occupation lines; namely, the centerline of a north/south road and the centerline of an east/west road.

For additional information, contact the Mn/DOT Surveys Section at Willmar, Mn 56201.

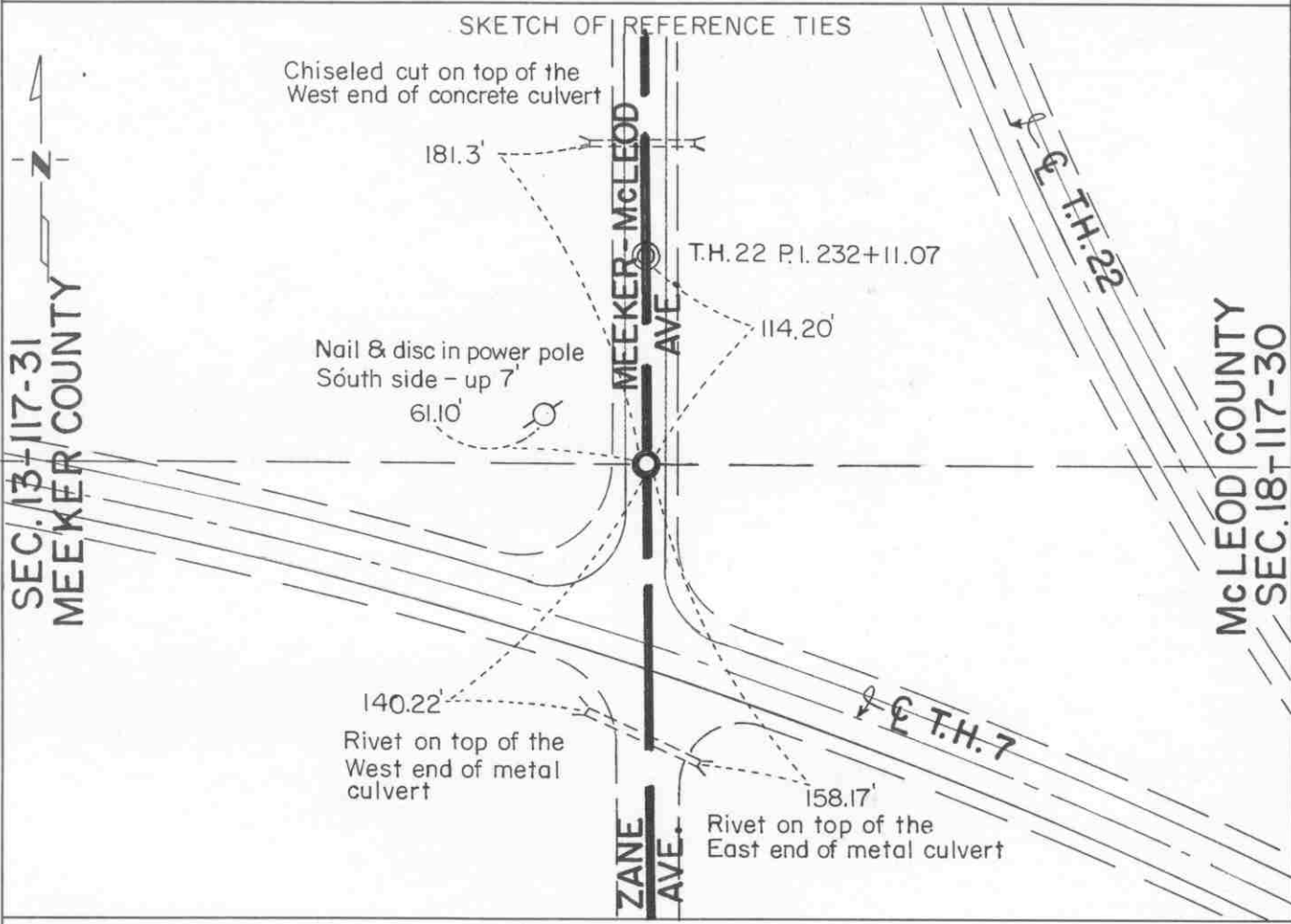
CERTIFICATE OF LOCATION OF GOVERNMENT CORNER

West Quarter _____ Corner of Section 18, Township 117 N, Range 30 W, 5th P.M.

STATE OF MINNESOTA, County of McLeod

At the corner location shown on the sketch:

- On May 14, 1993 found a cast iron monument at road surface
DATE
- left monument as found, lowered monument, removed monument (explain)
- On _____ placed a _____
DATE



Statement of evidence relative to this corner location is on back of page.

I hereby certify that this document and the data contained herein was prepared by me or under my direct supervision.

Robert G. Guss
SIGNATURE

Nov. 20, 1995
DATE

Registration No. 11864

- Land Surveyor, Professional Engineer
- County Surveyor, County Engineer

OFFICE OF THE COUNTY RECORDER

County of McLeod

I hereby certify that this document was filed in the Co. Recorders office at 9 A. .M. on the 29th day of November A.D., 1995

County Recorder Carmen Asthe Mulder

By Phyllis Sopkowiak, Deputy

DOCUMENT NO. 269551

Statement of Evidence: West Quarter Corner Section 18, T 117 N, R 30 W

- 1855 - The township line between Range 30 West and Range 31 West was completed by John Ryan. A wood post was set over a deposit of charcoal in a dirt mound as per the instructions.
- 1880 - L. E. Dudley surveyed the east line of Section 13 (the west line of Section 18). He did not indicate what monumentation was found or set.
- 1892 & 1905 N. Y. Taylor, Meeker County Surveyor, either found or set a field stone with an "X" marked on it at the corner.
- 1899 - E. L. Higgins, McLeod County Surveyor, found a stone at the corner.
- 1944 - The Minnesota Highway Department right of way map shows the corner to be 139.2 feet westerly of T.H. 22 P.O.S.T. 182.0 feet ahead of P.I. 232+11.07. It was located at the centerline of a north/south road and in line with a fence to the west.
- 1972 - McCombs Knutson Associates, acting as McLeod County Surveyor, established the corner using using information from T.H. 7 and T.H. 22 Minnesota Highway Department plans. A 1/2" diameter iron pipe was set to mark the corner.
- 1976 - Willard Pellinen, McLeod County Surveyor, set a cast iron monument to replace the 1/2" diameter iron pipe. He stated that the distance to the southwest corner of Section 18 is within 3 feet of Taylor's 1905 distance.
- 1978 - John W. Drake Jr., Registered Land Surveyor with Mn/DOT, found the cast iron monument. It was tied into a project coordinate system. He filed a Certificate of Location of Government Corner (Document No.196644) with the Meeker County Recorder on July 31, 1980.
- 1993 - A Mn/DOT survey crew, headed by Gene East, recovered the cast iron monument and all but one of the reference ties shown on the 1980 certificate.

The cast iron monument is located 142.12 ft. westerly of the intersection of the east/west quarter line and the forward semi-tangent of the T.H. 22 centerline curve. The said intersection is 182.22 ft. southeasterly of the P.I. of said curve. The right of way map shows these two distances to be 139.2 ft. and 182.0 ft. respectively. It is also located 1.13 ft. east and 0.18 ft. north of the lost location.

The cast iron monument is accepted as the corner location because it closely fits the location shown on the right of way map and it perpetuates a position that fit long standing occupation lines.

For additional information, contact the Mn/DOT Surveys Section at Willmar, Mn 56201.